

 **SENNHEISER**

The Sound Games Are Made Of



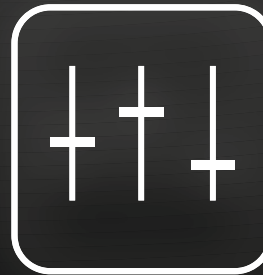
EQUALIZER

OFF

MI

 **DOLBY**

## Surround Dongle for Sennheiser Gaming headsets



User Guide  
Bedienungsanleitung  
Notice d'emploi  
Istruzioni per l'uso  
Instrucciones de uso  
Manual de instruções  
Bedieningsinstructies

Οδηγίες λειτουργίας  
Betjeningsvejledning  
Bruksanvisning  
Käyttöohje  
Instrukcja obsługi  
Инструкция по  
эксплуатации

使用说明书  
使用説明書  
Kullanım kılavuzu  
取扱説明書  
Buku petunjuk  
사용 설명서

 **SENNHEISER**

## 1 Scope of delivery

Lieferumfang | Contenu | Dotazione | Volumen de suministro | Material fornecido | Omvang van de levering | Συσκευασία παράδοσης | Leveringsomfang | Medföljande delar | Toimitussisältö | Zakres dostawy | Комплект поставки | 供货范围 | 供货範圍 | Teslimat kapsamı | 同梱品 | Isi kemasan | 구성품

## 2 Installing the driver & connecting the Surround dongle

Treiber installieren & Surround dongle anschließen | Installation du pilote & connexion du dongle Surround | Installazione del driver e collegamento del dongle surround | Instalar el controlador & conectar el dongle Surround | Instalar o controlador e ligar o Surround Dongle | Driver installeren & surround-dongle aansluiten | Εγκατάσταση του προγράμματος οδήγησης και σύνδεση του surround dongle | Installation af driver og tilslutning af surround-dongle | Installera nödvändig drivrutin & anslut Surround-dongle | Asenna ajuri ja liitä surround-käyttöavain | Instalowanie sterowników i podłączanie klucza sprzętowego Surround Dongle | Установка драйвера и подключение Surround Dongle | 安裝驅動程序并連接 Surround dongle | 安裝驅動程式和連接 Surround dongle | Sürücünün kurulumu ve Surround dongle'in bağlanması | ドライバーのインストールおよびサラウンド dongle の接続 | Menginstal driver & menyambungkan dongle surround | 드라이버 설치 & 서라운드 dongle 연결

## 3 Adjusting the PC sound settings

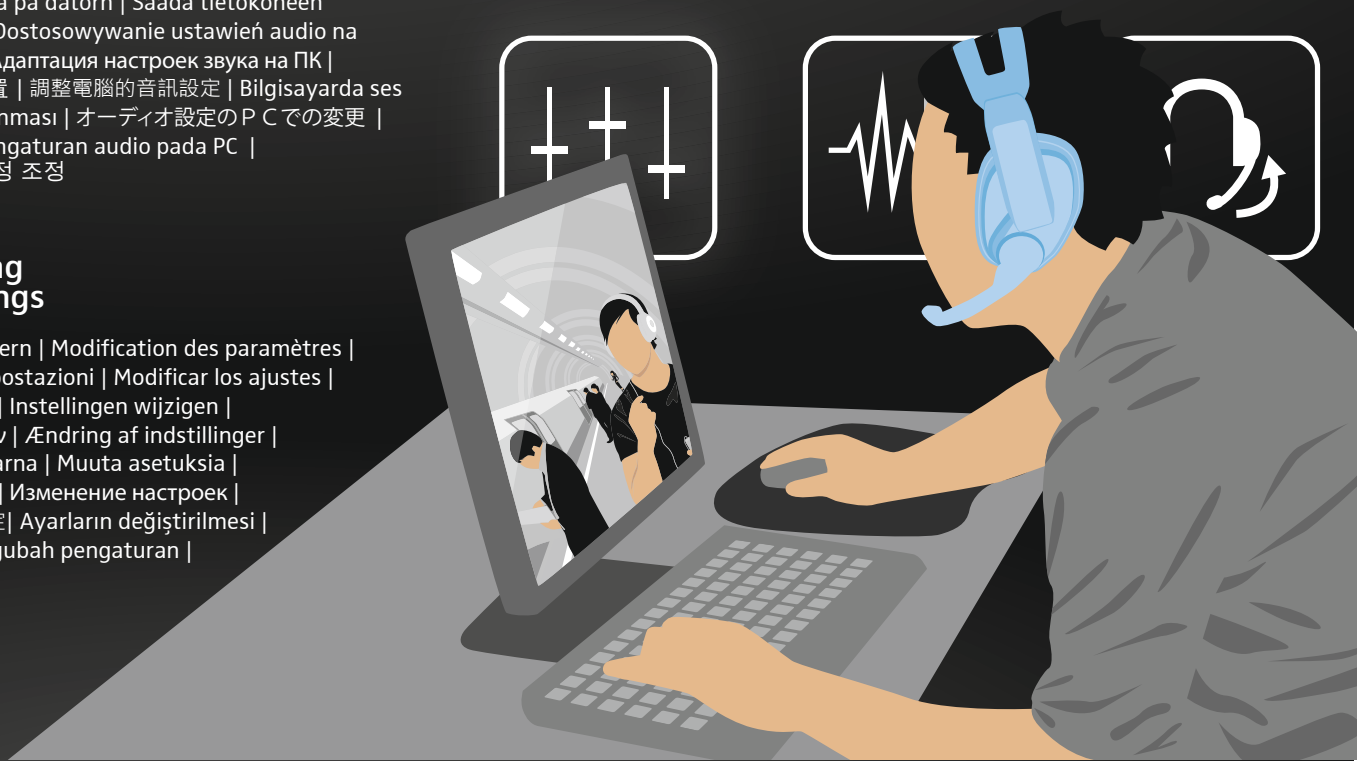
Audioeinstellungen am PC anpassen | Réglage des paramètres audio du PC | Adattamento delle impostazioni audio sul PC | Ajustar los ajustes de audio en el PC | Ajustar as definições de áudio no PC | Audio-instellingen op de pc aanpassen | Προσαρμογή των ρυθμίσεων ήχου σε PC | Tilpasning af audioindstillinger på en pc | Justera ljudinställningarna på datorn | Säädä tietokoneen audioasetukset | Dostosowywanie ustawień audio na komputerze PC | Адаптация настроек звука на ПК | 調整電腦的音頻設置 | 調整電腦的音訊設定 | Bilgisayarda ses ayarlarının uyarlanması | オーディオ設定のPCでの変更 | Menyesuaikan pengaturan audio pada PC | PC에서 오디오 설정 조정

## 4 Changing settings

Einstellungen ändern | Modification des paramètres | Modifica delle impostazioni | Modificar los ajustes | Alterar definições | Instellingen wijzigen | Αλλαγή ρυθμίσεων | Ændring af indstillinger | Ändra inställningarna | Muuta asetuksia | Zmiana ustawień | Изменение настроек | 更改設置 | 變更設定 | Ayarların değiştirilmesi | 설정의 변경 | Mengubah pengaturan | 설정 변경

## 5 Cleaning the product

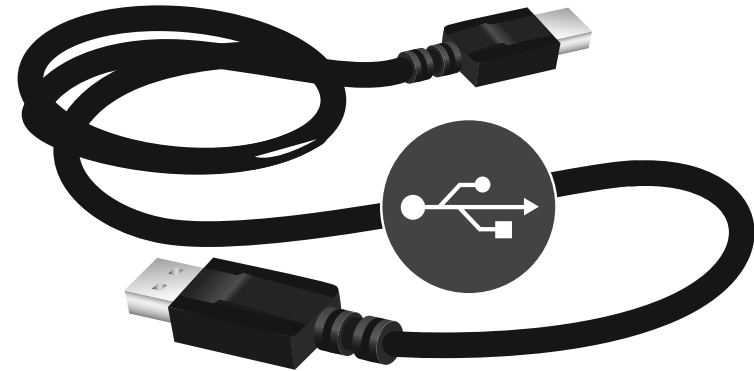
Produkt reinigen | Nettoyage de l'appareil | Pulizia del prodotto | Limpiar el producto | Limpar o produto | Product reinigen | Καθαρισμός προϊόντος | Rengøring af produktet | Rengör produkten | Puhdista tuote | Czyszczenie produktu | Очистка изделия | 清洁产品 | 清潔產品 | Ürünün temizlenmesi | 製品のお手入れ | Membersihkan produk | 제품 청소



Surround Dongle



USB cable



Quick  
Guide



Safety  
Guide



Manufactured under license from Dolby Laboratories.  
Dolby and the double-D symbol are trademarks of  
Dolby Laboratories.

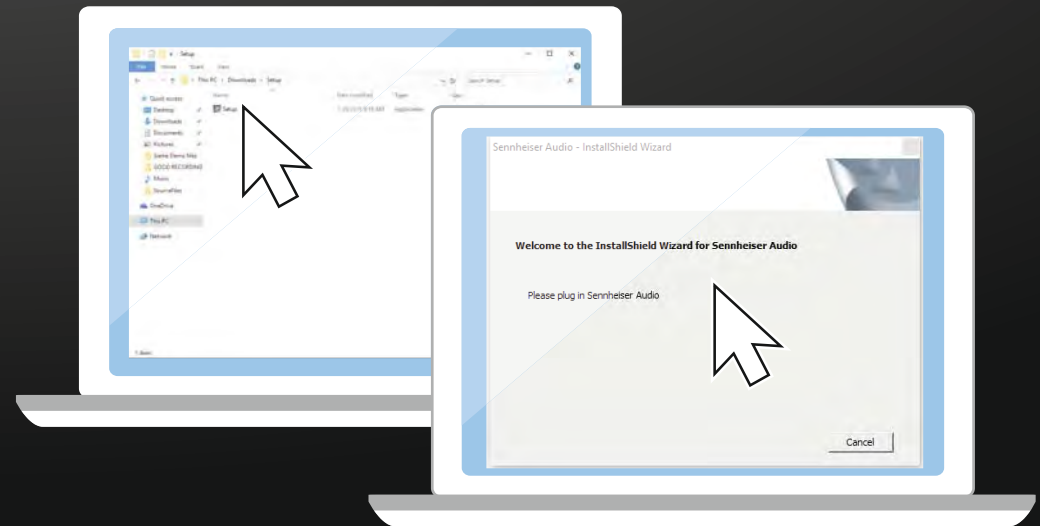
Scope of delivery | Lieferumfang | Contenu |  
Dotazione | Volumen de suministro | Material fornecido |  
Omvang van de levering | Συσκευασία παράδοσης | Leveringsomfang |  
Medföljande delar | Toimitussisältö | Zakres dostawy |  
Комплект поставки | 供货范围 | 供货範圍 | Teslimat kapsamı |  
同梱品 | Isi kemasan | 구성품

## Download newest driver



Please visit our website  
and download the newest driver  
[www.sennheiser.com/gaming-downloads](http://www.sennheiser.com/gaming-downloads)

## Open setup file

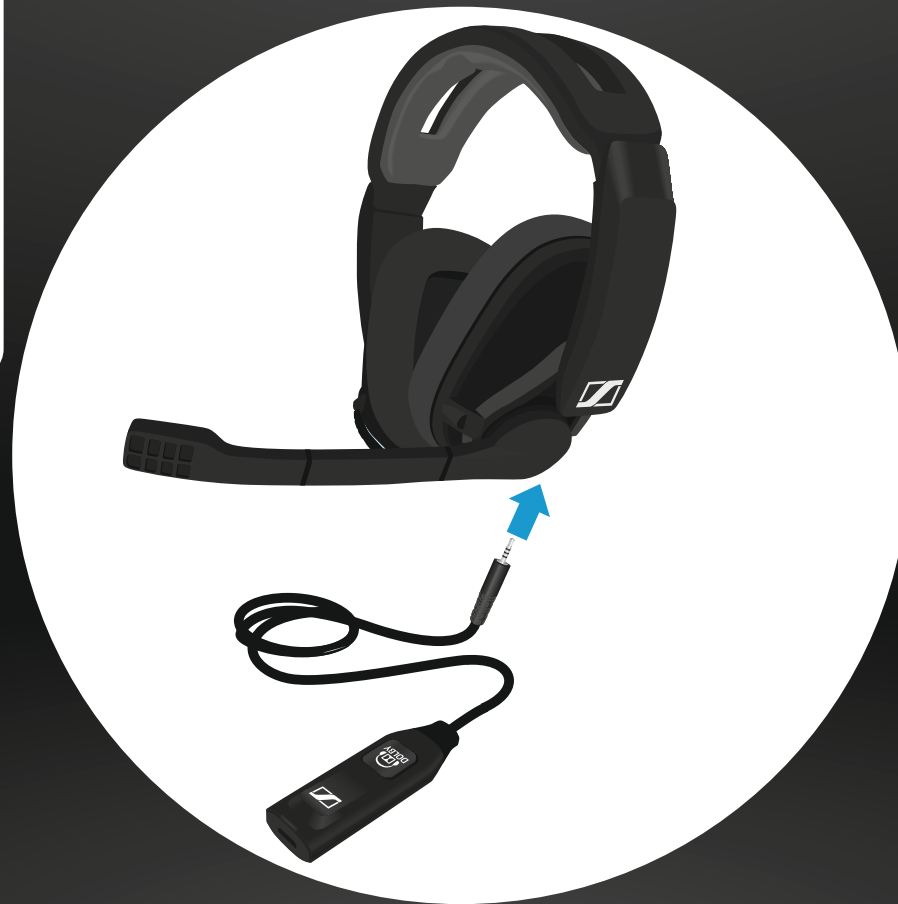


1. Double click the setup file.
2. Follow the instructions.  
How to plug in "Sennheiser audio"?  
See next two pages.

Installing the driver on a PC | Treiber auf einem PC installieren | Installation du pilote sur le PC |  
Installazione del driver su PC | Instalar el controlador en el PC | Instalar o controlador num PC |  
Driver op een pc installeren | Εγκατάσταση του προγράμματος οδήγησης σε έναν υπολογιστή | Installation af driver på en pc |  
Installera drivrutinen på en dator | Asenna ajuri tietokoneeseen | Instalowanie sterowników na komputerze |  
Установка драйвера на ПК | 在电脑上安装驱动程序 | 在電腦上安裝驅動程式 | Sürücünün bilgisayara kurulumu |  
ドライバーのPCへのインストール | Menginstal driver pada PC | PC에 드라이버 설치

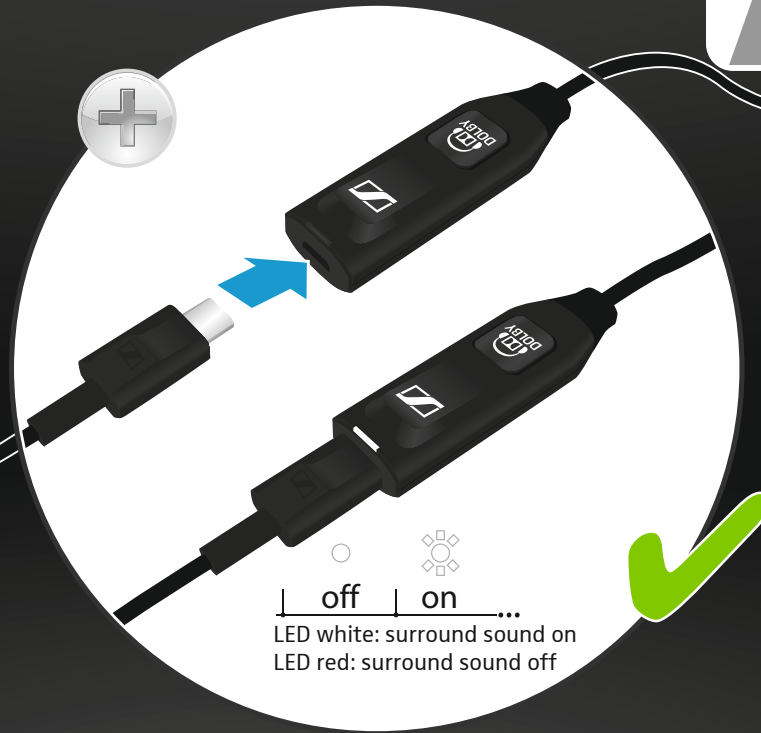
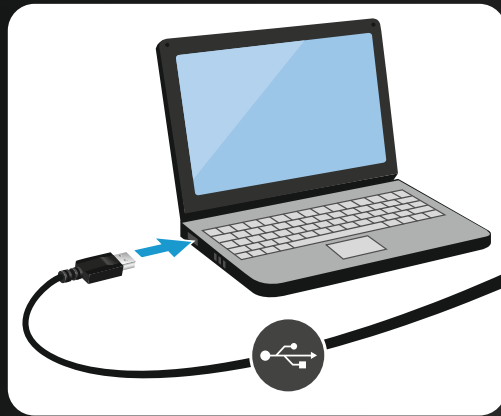


## Connect a headset



Connecting the headset | Headset anschließen | Connexion du casque microphone | Collegamento dell'headset | Conectar el headset | Ligar os microauscultadores | Headset aansluiten | Σύνδεση του σετ κεφαλής | Tilslutning af hovedsættet | Anslut headset | Liitä kuulokemikrofoni | Podłączenie zestawu słuchawkowego | Подключение гарнитуры | 连接耳机 | 連接耳機 | Kulaklığın bağlanması | ヘッドセットを接続する | Menyambungkan headset | 헤드셋 연결하기

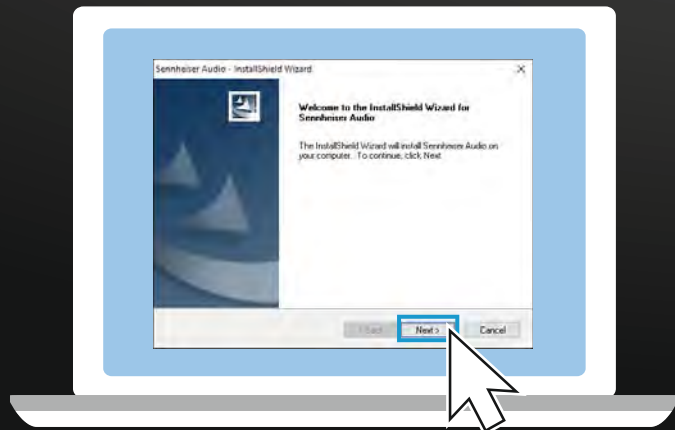
Connect to a PC



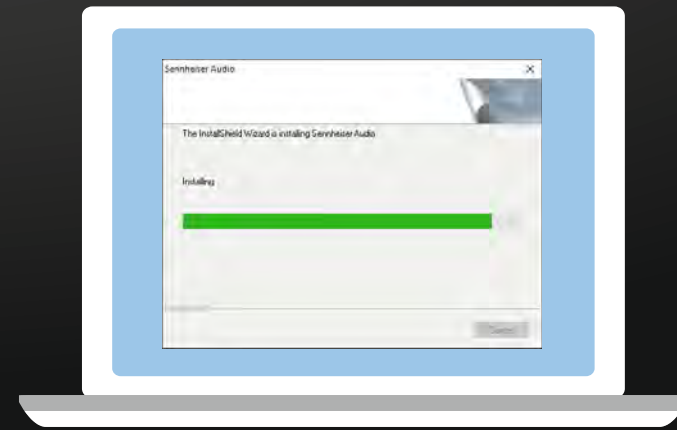
off on ...  
LED white: surround sound on  
LED red: surround sound off

Connecting the Surround Dongle to a PC | Surround Dongle an PC anschließen | Connexion du dongle Surround au PC | Collegamento del dongle surround al PC | Conectar el dongle Surround al PC | Ligar o Surround Dongle ao PC | Surround-dongle op pc aansluiten | Σύνδεση του surround dongle σε PC | Tilslutning af surround-donglen på en pc | Anslut Surround-dongeln på datorn | Liitä surround-käyttövain tietokoneeseen | Podłączenie klucza sprzętowego Surround Dongle do komputera | Подключение Surround Dongle к ПК | 连接电脑上的 Surround Dongle | 將 Surround dongle 連接至電腦 | Surround Dongle'in bilgisayara bağlanması | サラウンド dongle の PC への接続 | Menghubungkan dongle surround pada PC | PC에 서라운드 dongle 연결

## Follow the Install Wizard



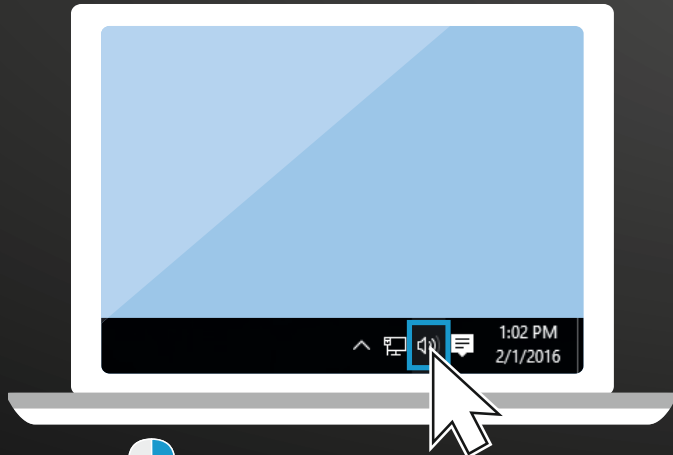
1. Click "Next" to continue the installation.



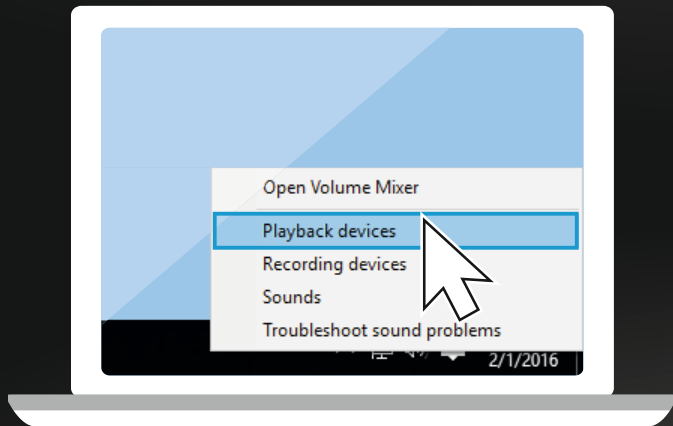
2. Click "Finish" to close the Window.

Finishing installation | Installation abschließen | Fin de l'installation |  
Completamento dell'installazione | Finalizar la instalación | Concluir a instalação |  
Installatie afsluiten | Ολοκλήρωση εγκατάστασης | Afslutning af installationen |  
Avslut installationen | Päätä asennus | Zakończenie instalacji |  
Завершение установки | 安装结束 | 安裝結束 | Kurulumun tamamlanması |  
インストールの完了 | Menyelesaikan instalasi | 설치 종료

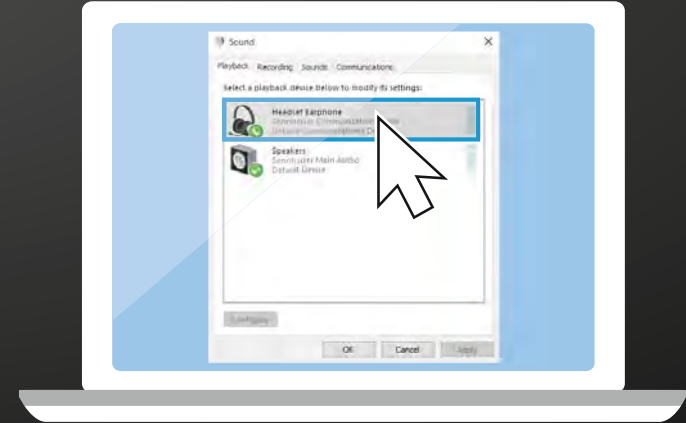
## 3 Adjusting PC settings



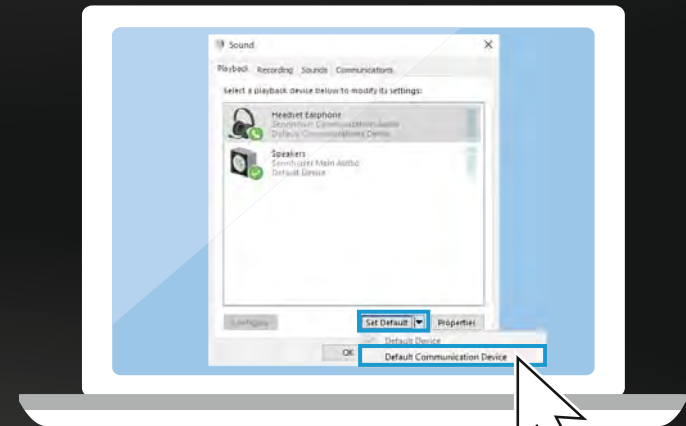
1. Right-click the Audio icon.



2. Select "Playback devices".



3. Select "Headset Earphone"  
"Sennheiser Communication Audio".

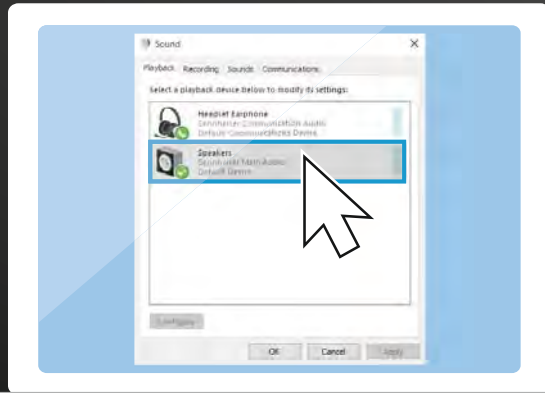


4. Select "Set Default" and  
"Default Communication Device".

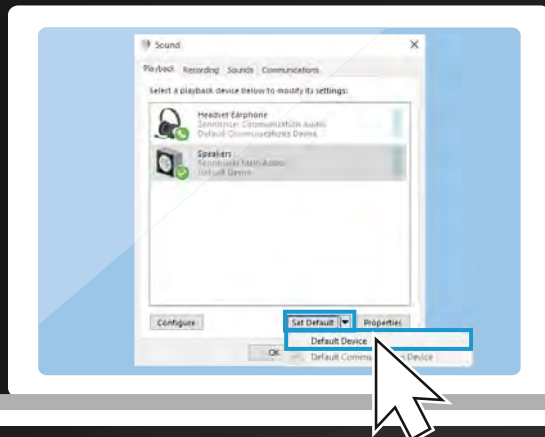
Adjusting the PC sound settings | Audioeinstellungen am PC anpassen | Réglage des paramètres audio du PC |  
Adattamento delle impostazioni audio sul PC | Ajustar los ajustes de audio en el PC | Ajustar as definições de áudio no PC |  
Audio-instellingen op de pc aanpassen | Προσαρμογή των ρυθμίσεων ήχου σε PC | Tilpasning af audioindstillinger på en pc |  
Justera ljudinställningarna på datorn | Säädä tietokoneen audioasetukset | Dostosowywanie ustawień audio na komputerze PC |  
Адаптація налаштувань звуку на ПК | 调整电脑的音频设置 | 調整電腦的音訊設定 | Bilgisayarda ses ayarlarının uyarlanması |  
オーディオ設定のPCでの変更 | Menyesuaikan pengaturan audio pada PC | PC에서 오디오-설정 조정



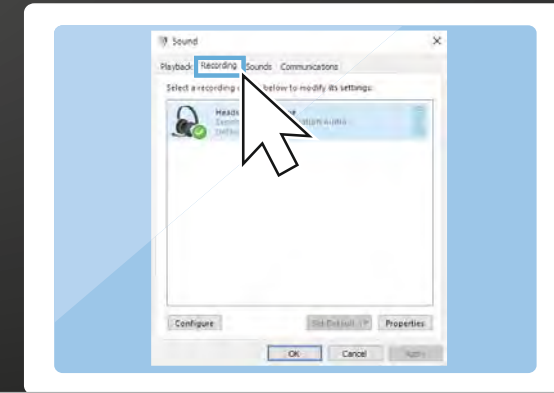
## 3 Adjusting PC settings



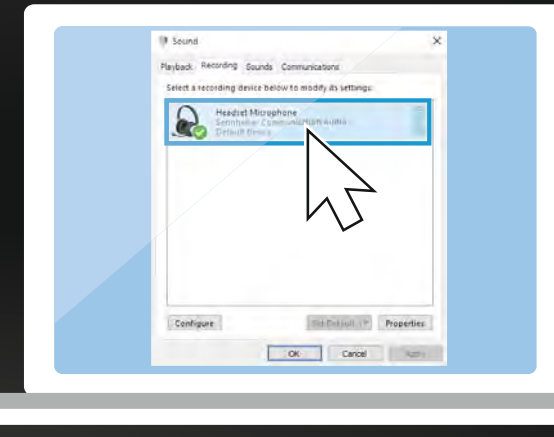
5. Select "Speakers"  
"Sennheiser Main Audio".



6. Select "Set Default" and "Default Device".



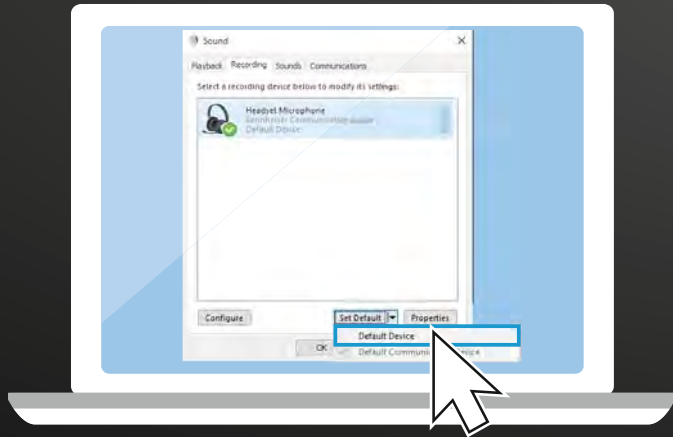
7. Select tab "Recording".



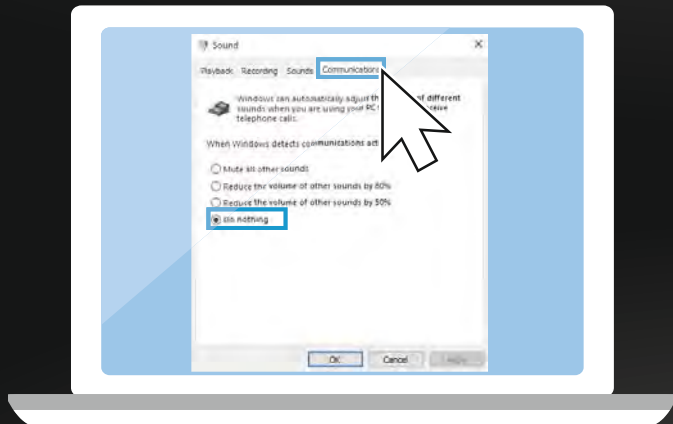
8. Select "Sennheiser Communication Audio".

Adjusting the PC sound settings | Audioeinstellungen am PC anpassen | Réglage des paramètres audio du PC |  
Adattamento delle impostazioni audio sul PC | Ajustar los ajustes de audio en el PC | Ajustar as definições de áudio no PC |  
Audio-instellingen op de pc aanpassen | Προσαρμογή των ρυθμίσεων ήχου σε PC | Tilpasning af audioindstillinger på en pc |  
Justera ljudinställningarna på datorn | Säädä tietokoneen audioasetukset | Dostosowywanie ustawień audio na komputerze PC |  
Адаптация настроек звука на ПК | 調整電腦的音頻設置 | 調整電腦的音訊設定 | Bilgisayarda ses ayarlarının uyarlanması |  
オーディオ設定のPCでの変更 | Menyesuaikan pengaturan audio pada PC | PC에서 오디오-설정 조정

# 3 Adjusting PC settings

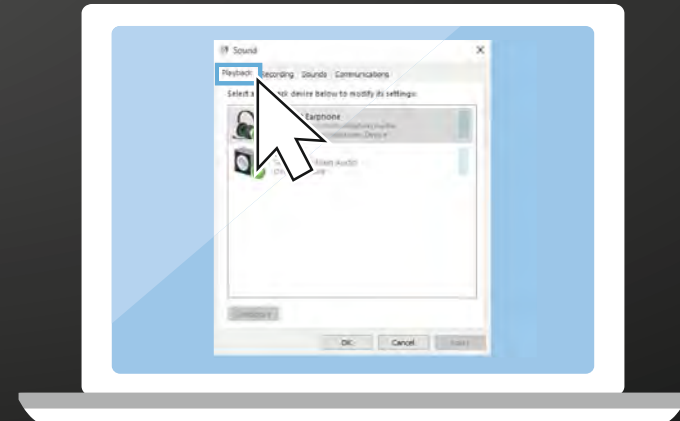


9. Select "Default Device".

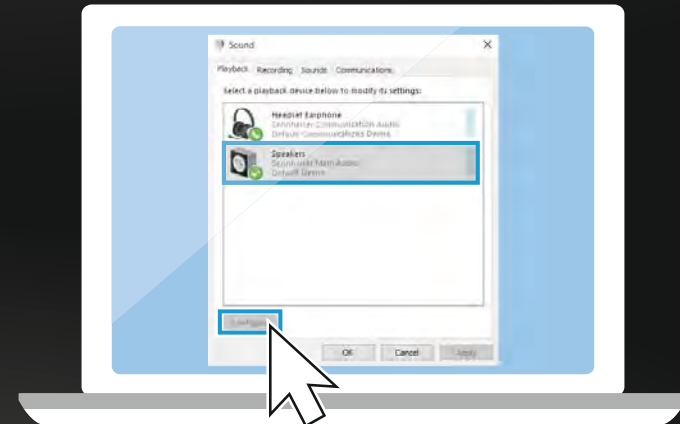


10. Select tab "Communications".  
11. Select "Do nothing".

## 7.1 surround sound



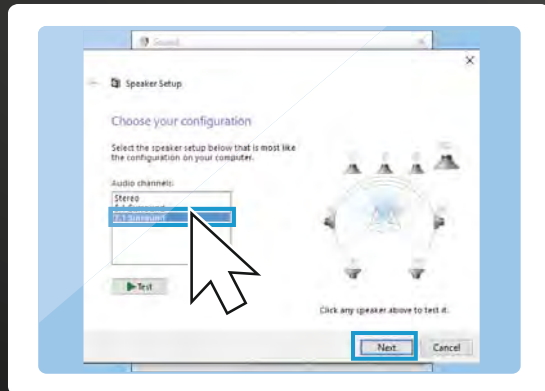
12. Select tab "Playback".



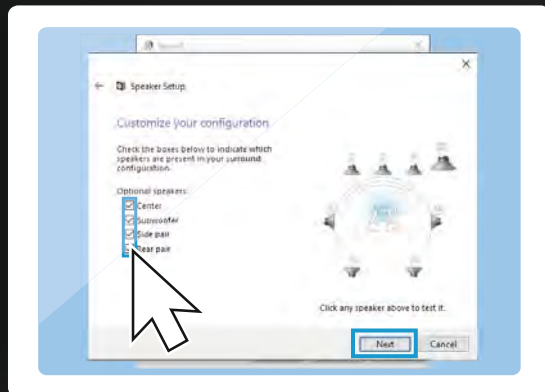
13. Select Speakers "Sennheiser Main Audio".  
14. Click "Configure".

Adjusting the PC sound settings | Audioeinstellungen am PC anpassen | Réglage des paramètres audio du PC |  
Adattamento delle impostazioni audio sul PC | Ajustar los ajustes de audio en el PC | Ajustar as definições de áudio no PC |  
Audio-instellingen op de pc aanpassen | Προσαρμογή των ρυθμίσεων ήχου σε PC | Tilpasning af audioindstillinger på en pc |  
Justera ljudinställningarna på datorn | Säädä tietokoneen audioasetukset | Dostosowywanie ustawień audio na komputerze PC |  
Адаптація налаштувань звуку на ПК | 调整电脑的音频设置 | 調整電腦的音訊設定 | Bilgisayarda ses ayarlarının uyarlanması |  
オーディオ設定のPCでの変更 | Menyesuaikan pengaturan audio pada PC | PC에서 오디오-설정 조정

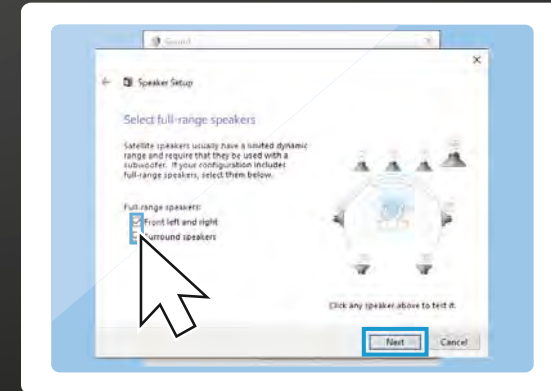
## 3 Adjusting PC settings



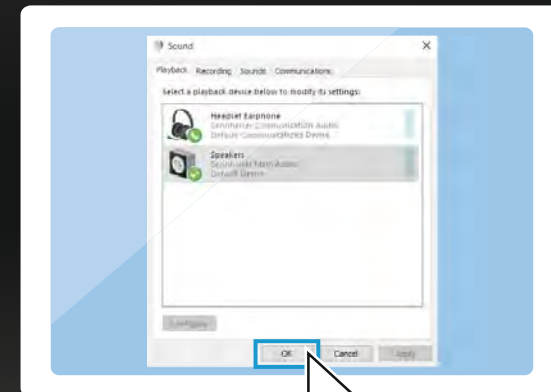
15. Select "7.1 Surround" and click "Next".



16. Activate all options and click "Next".



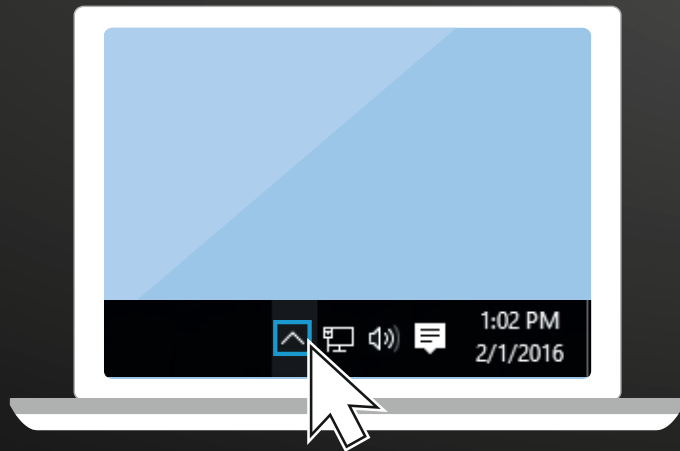
17. Activate all options and click "Next" to close "Speaker Setup".



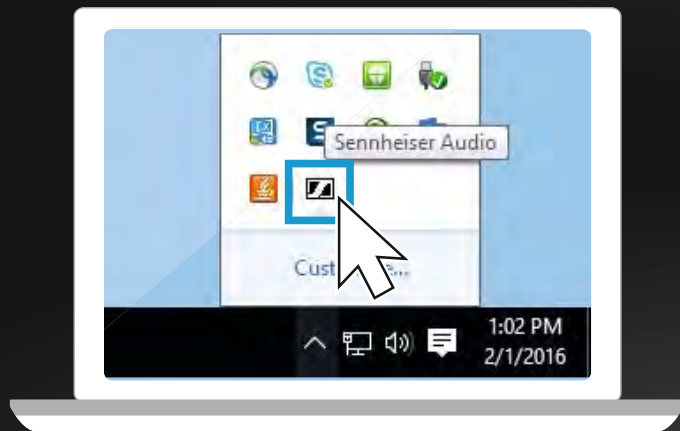
18. Click "OK" to save settings and close the window.

Adjusting the PC sound settings | Audioeinstellungen am PC anpassen | Réglage des paramètres audio du PC |  
Adattamento delle impostazioni audio sul PC | Ajustar los ajustes de audio en el PC | Ajustar as definições de áudio no PC |  
Audio-instellingen op de pc aanpassen | Προσαρμογή των ρυθμίσεων ήχου σε PC | Tilpasning af audioindstillinger på en pc |  
Justera ljudinställningarna på datorn | Säädä tietokoneen audioasetukset | Dostosowywanie ustawień audio na komputerze PC |  
Адаптація налаштувань звуку на ПК | 调整电脑的音频设置 | 調整電腦的音訊設定 | Bilgisayarda ses ayarlarının uyarlanması |  
オーディオ設定のPCでの変更 | Menyesuaikan pengaturan audio pada PC | PC에서 오디오-설정 조정

## Open the Sennheiser software



1. Click the small arrow in the taskbar.



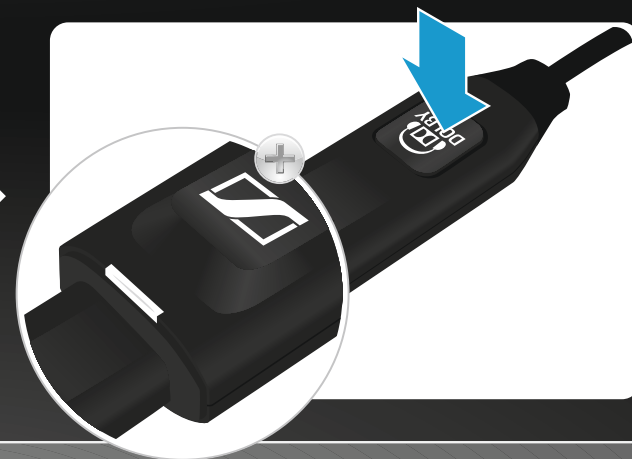
2. Click the "Sennheiser Audio" logo.



Open the "Sennheiser Audio" software | Software „Sennheiser Audio“ öffnen | Ouverture du logiciel « Sennheiser Audio » |  
Apertura del software "Sennheiser Audio" | Abrir el software "Sennheiser Audio" | Abrir o software "Sennheiser Audio" |  
Software „Sennheiser Audio“ openen | Άνοιγμα του λογισμικού "Sennheiser Audio" | Åbning af softwaren „Sennheiser Audio“ |  
Öppna programvaran „Sennheiser Audio“ | Avaa "Sennheiser Audio" -ohjelmisto | Otwieranie programu „Sennheiser Audio“ |  
Открытие программы Sennheiser Audio | 打开软件“Sennheiser Audio” | 打開軟體“Sennheiser Audio” (森海塞爾音訊) | "Sennheiser Audio" yazılımının açılması  
ソフトウェア「ゼンハイザー・オーディオ」を開く | Membuka perangkat lunak "Audio Sennheiser" | "Sennheiser Audio(오디오)" 소프트웨어 열기



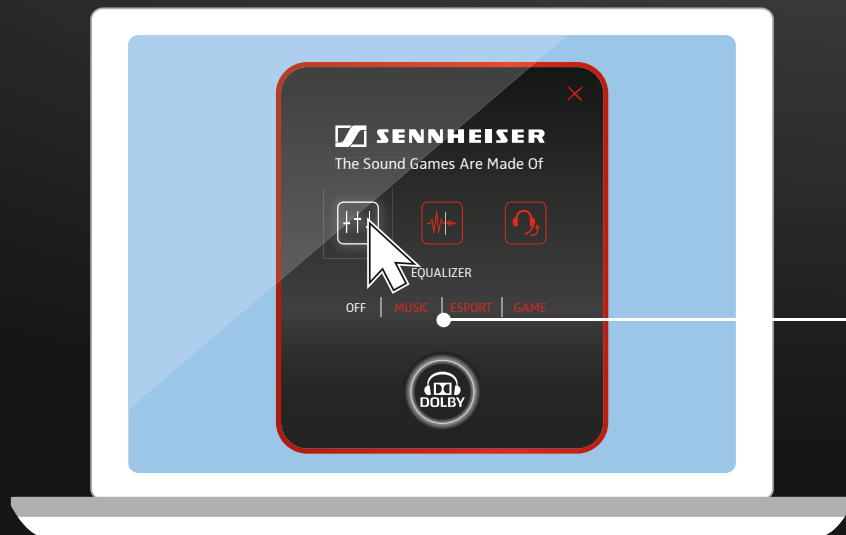
Click or press the Dolby Headphone icon



Switching on/off surround sound | Surround-Sound (Raumklang) ein-/ausschalten | Activation/Désactivation du son Surround (relief acoustique) | Attivazione/disattivazione del suono surround (stereofonico) | Activar/desactivar el sonido Surround (sonido envolvente) | Ligar/desligar o som surround (som ambiente) | Surround-sound (ruimtelijke klank) in-/uitschakelen | Ενεργοποίηση/απενεργοποίηση του surround sound (στερεοφωνικός ήχος) | Til-/frakobling af surround-sound (rumklang) | Surround-Sound (rumsligt ljud) koppla till/från | Kytke surround-ääni (tilaääni) päälle/pois | Włączanie / wyłączenie dźwięku przestrzennego (Surround Sound) | Включение и выключение объемного звучания | 开启/关闭环绕立体声 (立体声) | 打開/關閉環繞立體聲 (立體聲) | Surround-Sound'un (çevresel ses) açılması/kapatılması | サラウンド・サウンド (立体音響) のオンとオフ | Mengaktifkan/menonaktifkan suara surround | 서라운드 음향 (입체 음향) 켜기/끄기



Click the equalizer icon



OFF | MUSIC | ESPORT | GAME



OFF | MUSIC | ESPORT | GAME



OFF | MUSIC | ESPORT | GAME



OFF | MUSIC | ESPORT | GAME



Choosing equalizer settings | Equalizer-Einstellungen wählen | Sélection des paramètres de l'égaliseur |  
 Selezione delle impostazioni dell'equalizzatore | Seleccionar los ajustes del equalizador | Seleccionar as definições do equalizador |  
 Equalizer-instellingen selecteren | Επιλογή ρυθμίσεων του ισοσταθμιστή | Valg af equalizer-indstillinger |  
 Välj equalizerinställningar | Valitse Equalizer-asetukset | Wybór ustawień equalizera |  
 Выбор настроек эквалайзера | 选择均衡器设置 | 選擇均衡器設定 | Ekolayzer ayarlarının seçilmesi |  
 イコライザー設定の選択 | Memilih pengaturan equalizer | 이퀄라이저-설정 선택



Click the Noise reduction icon



Noise reduction OFF

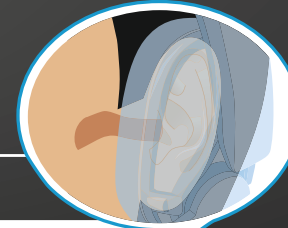


Noise reduction ON

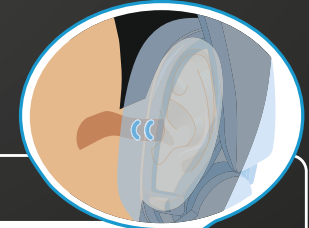
Switching microphone noise reduction on/off | Geräuschreduktion ein-/ausschalten | Activation / Désactivation de la réduction de bruit | Attivazione/disattivazione della riduzione dei rumori | Activar/desactivar la reducción de ruido | Ligar/desligar a redução de ruído | Ruisreductie in-/uitschakelen | Ενεργοποίηση/απενεργοποίηση μείωσης θορύβου | Til-/frakobling af støjræduktionen | Slå på/stäng av brusreducering | Kytke kohinanvaimennus päälle/pois | Włączanie / wyłączenie funkcji tłumienia szumów | Включение и выключение подавления шумов | 打开/关闭降噪 | 打開/關閉降噪 | Ses redüksiyonunun açılması/kapatılması | ノイズ低減のオンとオフ | Mengaktifkan/menonaktifkan reduksi kebisingan | 소음 제거 켜기/끄기



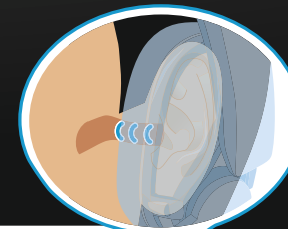
Click the headset icon



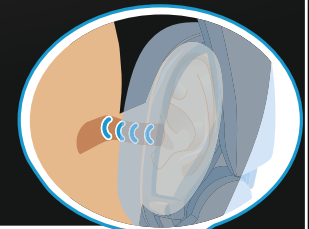
OFF | LOW | MID | HIGH



OFF | LOW | MID | HIGH



OFF | LOW | MID | HIGH

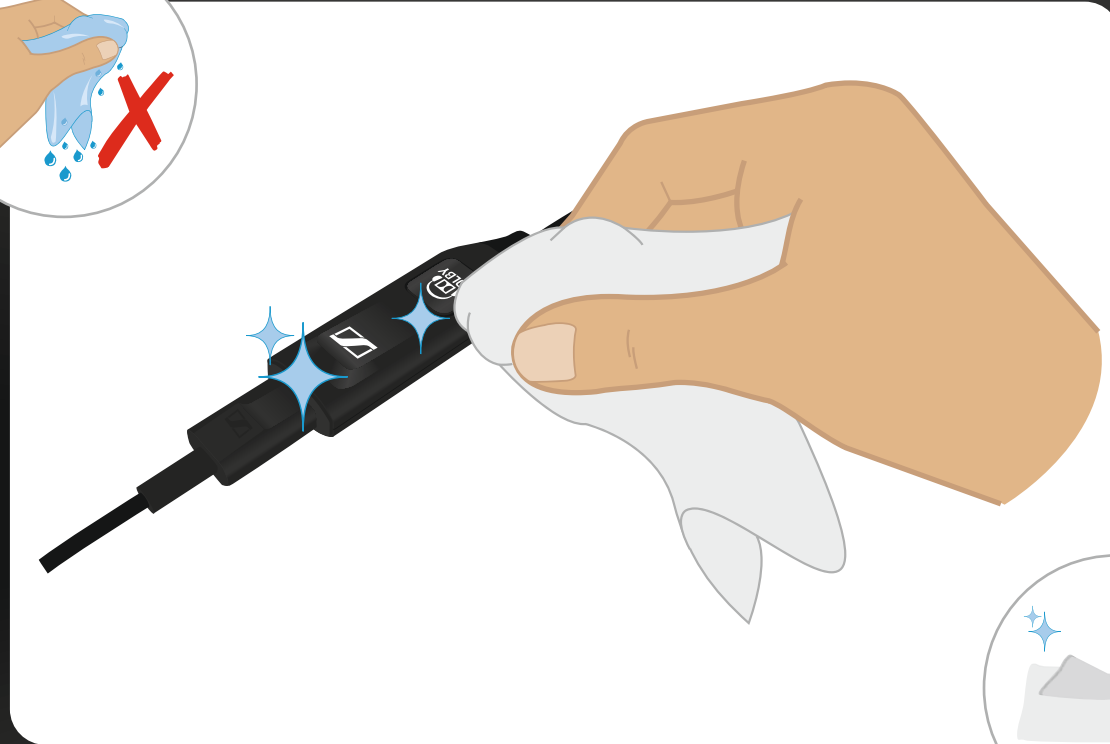


OFF | LOW | MID | HIGH

Adjusting the sidetone | Mithörton anpassen | Réglage du son d'écoute |  
 Adattamento dell'audio di ascolto | Ajustar el sidetone | Ajustar o tom lateral |  
 Meeluistergeluid aanpassen | Ρύθμιση πλευρικού τόνου | Tilpasning af medhørstone |  
 Justera ljudet för medlyssning | Säädä sivuääni | Regulacja funkcji podłuchu |  
 Изменение громкости посторонних звуков | 調整側音 | 調整側音 | Birlikte dinleme sesinin uyarlanması |  
 側音の調節 | Menyesuaikan nada samping | 측은 조정



Clean with a soft & dry cloth



Cleaning the product | Produkt reinigen | Nettoyage de l'appareil |  
Pulizia del prodotto | Limpiar el producto | Limpar o produto |  
Product reinigen | Καθαρισμός προϊόντος | Rengøring af produktet |  
Rengör produkten | Puhdista tuote | Czyszczenie produktu |  
Очистка изделия | 清洁产品 | 清潔產品 | Ürünün temizlenmesi |  
製品のお手入れ | Membersihkan produk | 제품 청소

Please visit our website for further information & tutorials:



[www.sennheiser.com/gaming-downloads](http://www.sennheiser.com/gaming-downloads)

Please contact our product service support:



[www.sennheiser.com/service-support](http://www.sennheiser.com/service-support)



**Sennheiser Communications A/S**

Industriparken 27, DK-2750, Denmark  
[www.sennheiser.com](http://www.sennheiser.com)

Publ. 05/16, A01